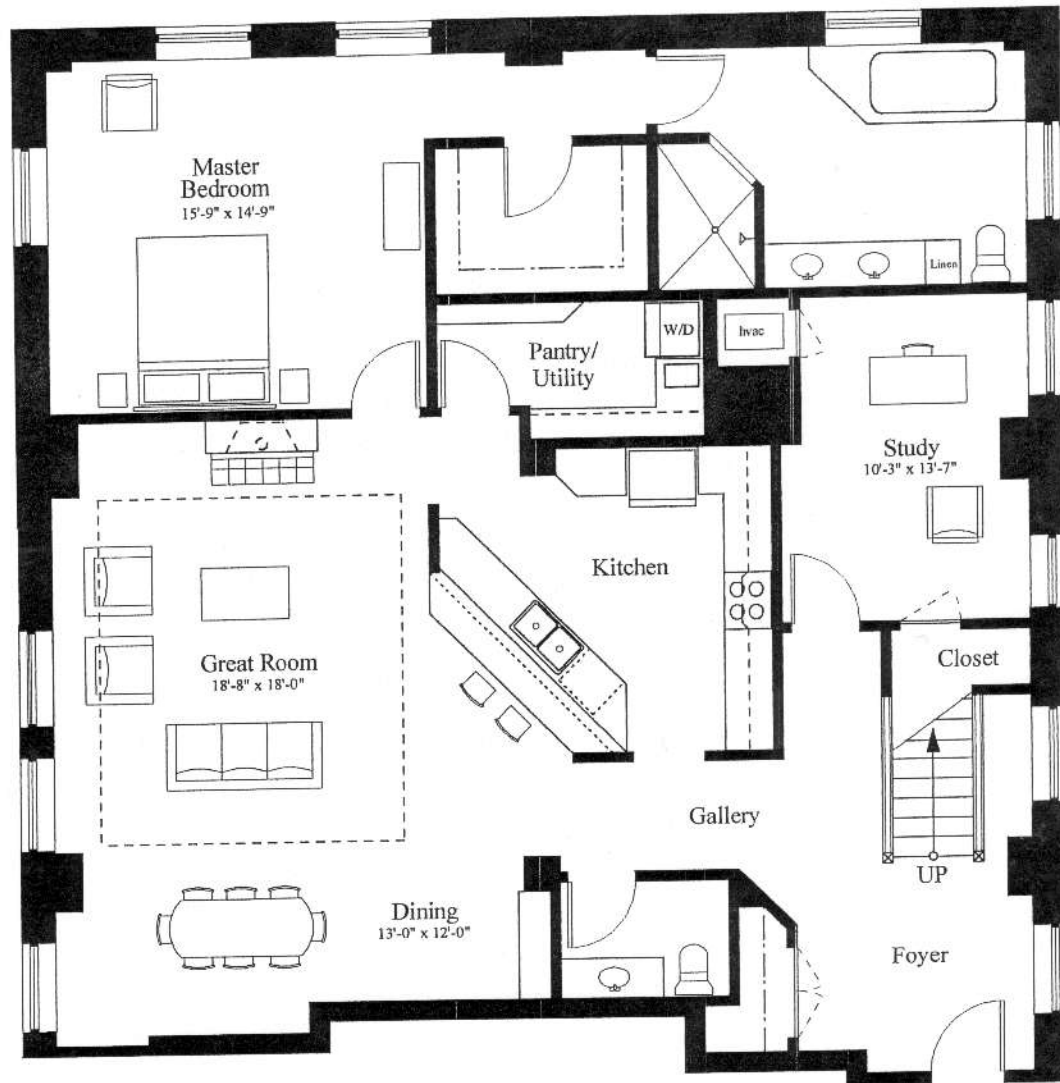


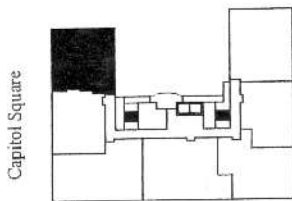
THE LORRAINE

Condominium Homes

"Penthouse 1007" 2,984 Square Feet + Terrace



1,970 SQ. FT.
Main Level

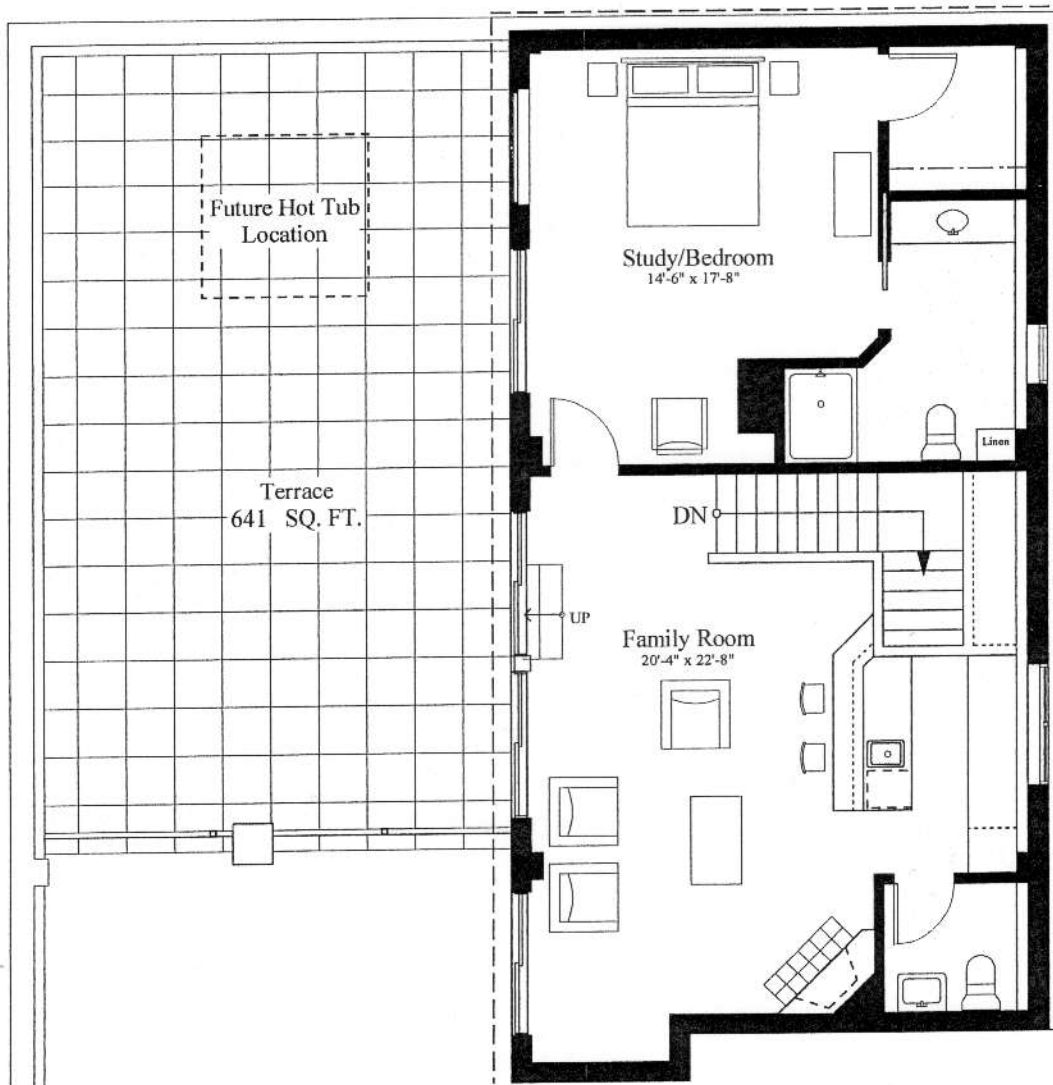


Capitol Square

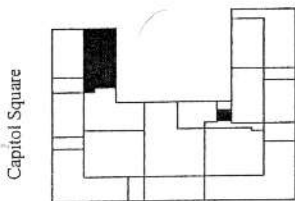
West Washington Ave.

UNIT 1007
Bedrooms - 3
Bathrooms - 2 1/2
Pantry/Utility,
Family Room

"Penthouse 1007" 2,984 Square Feet + Terrace



1,014 SQ. FT.
Main Level



Capitol Square

West Washington Ave.